



SOUTHAMPTON TOWNSHIP FRANKLIN COUNTY

FRANKLIN COUNTY

WWW.SOUTHAMPTONTOWNSHIP.ORG

Supporting the Emergency Services that Support You

The Township has been successful in keeping taxes as low as possible for residents. No new property taxes have needed to be enacted, other than a small amount for the library.

One of the most substantial ways the Township has been able to keep taxes reasonable is through the use of the Pennsylvania State Police, and our primary emergency services organization, who is ALL volunteer! This saves the Township residents hundreds of thousands of dollars each year. There is no way to provide a local police department and paid emergency services without passing a significant property tax increase!



Please thank any State Troopers you see and please support our contracted primary Volunteer Fire Department, West End Fire & Rescue, and Shippensburg Area EMS.

The Township supports West End financially, each year, but not their entire budget. They rely on donations from the public to help bridge the gap between income and expenses.

Some years, West End partners with Partnership for Better Health, and other

years they reach out with their own mail-in Fund Drive. Your Supervisors have granted West End Fire and Rescue and, in some parts of the Township, for Ambulance, Pleasant Hall Fire & Rescue to solicit funds for emergency services through the mail.

Shippensburg Area EMS provides emergency medical service to the remainder of the Township. They also offer Ambulance and Advanced Life Support subscriptions through the mail. If you are unsure if you are receiving solicitation or a subscription, please contact Shippensburg EMS. This subscription provides much needed assistance for them to continue to provide this life saving service.



If you receive a solicitation for donations in the mail from any other emergency services organization, they have not been granted permission to solicit you and you should discard it. Your primary emergency service provider is West End Fire and Rescue and in some areas near Orrstown residents may see a request from Pleasant Hall Fire & Rescue. Please support our contracted fire company, West End Fire and Rescue, the Orange Trucks at 49 Lurgan Avenue.

Bus Trips Offered

Shippensburg Community Parks and Recreation Authority is offering 9 different bus trips this fall with limited seating. Check out their website for more information at:

<https://shippensburgparkandrec.org/bus-trips>



LEAF COLLECTION SCHEDULE

Begins: End of October

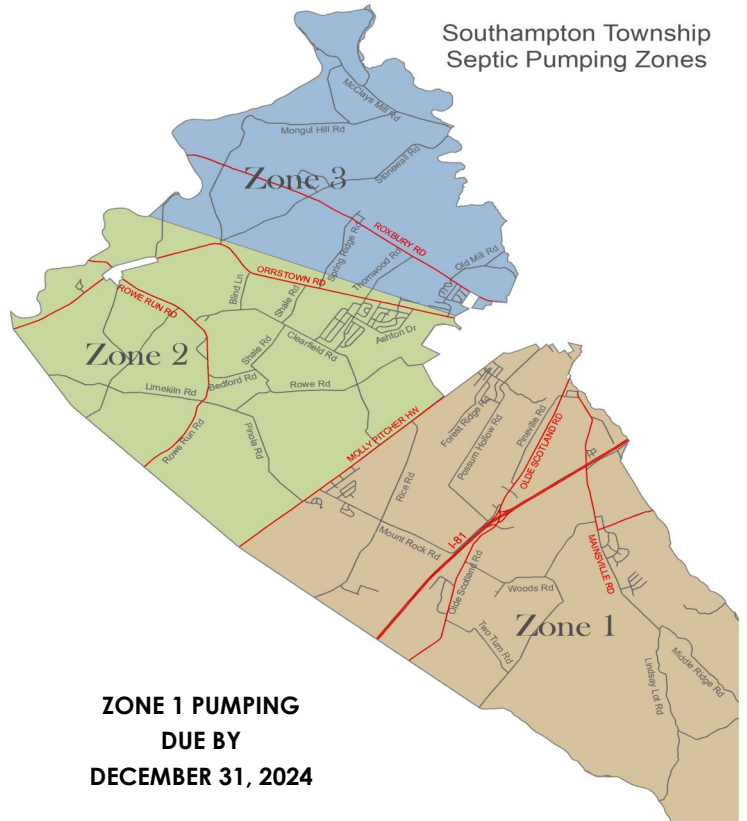
Ends Approximately: November 27

Once leaf collection begins, it will run Mondays through Thursdays. Collection will begin on the following Monday where it left off the previous week. With more than 60 miles of roads, and inclement weather, it may not be possible for your leaves to be collected every week.

If your leaves are not being collected, it may be because one of the following items are not being followed.

- Leaves must be raked into a row parallel with the blacktop.
- Leaves must be raked away from mailboxes, poles, cars and other obstructions.
- Twigs and branches must be kept out of leaf piles as they clog the machine.
- Be careful not to rake up stones, they are hard on the leaf machine.
- Absolutely NO pet waste!
- Leaves must not be raked within 50 ft. of a stop sign, this creates a dangerous situation.

Unless absolutely necessary, it is preferable that your leaves not be collected into trash bags and left by the roadside. Proper return/disposal of the bags is time consuming and trash bags are frequently passed by assuming they are garbage.



GENERAL ELECTION DAY
November 5th
Polls are open from
7:00 a.m.—8:00 p.m.

REGARDING SNOW

- In order for snow plows to be effective in clearing the roadways, parked vehicles, trash cans and basketball hoops must be removed from the road side at the on-set of snow.
- Reflective posts are effective in alerting snow plow drivers to where the road ends and your yard begins.
- For your own safety, give snow plow drivers plenty of space for backing up and spreading anti-skid.
- Primary roads are plowed first, then secondary roads and finally developments. If your road has not been plowed please be patient, we are working our way to you.
- Have your mailbox in good repair so it can handle the weight of snow coming off of the plow.

CONTACT THE TOWNSHIP

Southampton Township Office hours are from 7:00 a.m. until 4:00 p.m. Monday thru Friday. The office is closed on Holidays and the Friday after Thanksgiving. The facility is also used for primary and regular elections. Our office must be closed those days as well.

You may contact us by phone at **717-532-9041**, or our website at: www.southamptontownship.org. All are welcome to attend Board of Supervisors (BOS) meetings, Planning Commission (PC) meetings and Park & Recreation meetings. The dates are as follows:

Township Meeting Dates

- 1st Thursday of the Month—5:00 p.m. — Park & Rec.
- 2nd Tuesday of the Month—8:00 a.m. — BOS meeting
- 3rd Tuesday of the Month—5:00 p.m. — PC meeting
- 4th Tuesday of the Month—5:00 p.m. — BOS meeting

Changes to Bulky Trash Days

Southampton Township is adding two additional days to dispose of your bulky trash items. On September 25th and 26th, the Township is going to be open for SELF-UNLOAD only. From the hours of 3:00 p.m.—7:00 p.m., you will be permitted to bring your bulky items and self-unload them into dumpsters. If you require assistance please come on Friday or Saturday during bulky trash hours.

Self-Unload Only

Wednesday, September 25th	3:00 p.m.-7:00 p.m.
Thursday, September 26th	3:00 p.m.-7:00 p.m.

Self-Unload/Assisted Unload

Friday, September 29th	8:00 a.m.- 4:00 p.m.
Saturday, September 30th	8:00 a.m. until noon

Please note* Bulky Trash is for Southampton Township/Franklin County residents only. **ID will be required for admission.**

The drop-off spot will be at the Township building on Municipal Drive.

Items we DO NOT ACCEPT:

- ◆ liquid wastes of any kind, including waste oil, paint, insecticides, inks and solvents, aerosols or pressurized containers
- ◆ motors containing gasoline
- ◆ ammunition or anything explosive
- ◆ hospital/biohazard waste
- ◆ industrial wastes of any kind
- ◆ anything containing asbestos
- ◆ **yard waste** or soil
- ◆ dead animals
- ◆ tires on rims
- ◆ **NO ELECTRONICS WILL BE ACCEPTED**

(See Below)

Free Electronics Recycling

Goodwill in Chambersburg now accepts electronics such as TV's and computers for FREE at their 1021 Wayne Ave. location. You can call 717-267-0488 for store hours and details.

The Township will accept up to 4 automobile tires from each household as long as they are residential/light duty tires. There will be a \$3/tire charge for each additional tire. **No heavy duty/commercial truck or tractor tires will be accepted.**

We accept major appliances, dehumidifiers, microwaves, large pieces of furniture and carpet at no charge.

We will have big roll-off containers on site if you would like to self-unload. Otherwise, the employees will be happy to help you unload into the loaders.

If you self-unload, we will have **orange metal salvage** containers on-site. Please take a few extra minutes to throw all metal items into these containers for recycling.

As a free service to assist **elderly** and **handicapped**, Lane Thrush of Keller-Williams Keystone Realty in Chambersburg is offering volunteers to pick up the items for you on Thursday, September 26th from 8:00 a.m.-1:00 p.m. **All bulk items are required to be outside of the home for pickup.** You will still be responsible for any fees that may be associated with the junk. If you need help and want to schedule a pickup, just call Lane's office at **717-504-8002** no later than **Wednesday, September 25th.**

Thank You! **Keller-Williams**—for helping our disabled and elderly dispose of their bulky items.

Cardboard Recycling Offered

Cardboard recycling will be offered. We will have two locations to deposit your cardboard. Please make sure your boxes have no trash in them and are flattened.

* TIP: If you have paint cans with a small amount of wet paint in, open the cans now and put some kitty litter in. This will absorb the liquid and get hard. We can accept them at this point.

SOUTHAMPTON TOWNSHIP

FRANKLIN COUNTY

Southampton Township
705 Municipal Drive
Shippensburg, PA 17257
Phone: 717-532-9041

Your Supervisors

- ◆ Sam Cressler
- ◆ Randy Brenize
- ◆ Roger Hall

Some Notes From the Permit/Code Enforcement Office

A Land Use Permit may take up to 72 hours to be approved, thus it must be submitted at least 72 hours before the project is to begin. No work/construction may be started prior to the permit being approved.

The Township does not have a Firework Ordinance but instead follows the State regulations. Please reference these regulations which can easily be found on-line. Many of the questions/complaints the Township receives have to do with requirements regarding distance. The State regulations state in section §1104 under (b) Prohibitions, (5) fireworks may not be used within 150 feet of a building or vehicle, whether or not the building or vehicle is owned by the user of the consumer fireworks.

Land Use Permits are required for sheds, fences and pools.

Township Ordinance defines Nuisance Vegetation as:

(1) Any grass, weeds or other vegetation whatsoever in excess of 12 inches in height which is within 100 feet of any structure used for residential purposes.

Please reference Township Chapter 11 for addition information.

You can find all of the Township Ordinances at www.southamptontownship.org and click the red “quick links” tab on the left side of the page and follow “codes.”

